

WHAT'S NEW IN VERSION 21.0 OF THE NAVPAK DISPATCHER



NAVPAK SQUIRT HAS BEEN REBORN AS NAVPAK SQUIRT MOBILE

Six years ago computing mobility was provided by a PDA, particularly the Palm PDA. That was the stimulus that motivated us to produce the original Squirt for the Palm operating system.

Today's Road Warrior is more likely to be found with a "smart phone", such as the **Blackberry** or the **Iphone**, with the power to receive email and the internet. That was our reason for creating the new **NAVPAK Squirt Mobile**. Starting with Version 21.0 of NAVPAK, the Squirt Mobile will be available to each NAVPAK customer. If you have a 1-3 User license, your department can receive up to three Usernames and Passwords.

NAVPAK Squirt Mobile is designed to provide four of the most essential questions that are answered by the desktop version of NAVPAK. They are "how fast", "how far", "how much" and "what is the airport ID"? Squirt Mobile permits the operator to personalize the aircraft performance file and the

charge-per-hour. Once this information is set up, it is relatively easy to enter a string of airport identifiers and then press the Calculate button. The distance, time and charge for each leg is stated as well as totals. If the operator wants to send that information back to the office or an associate, it can be addressed and sent from the Squirt screen.

While the original Squirt for the PDA was sold as an add-on feature, the Squirt Mobile is now a part of the basic NAVPAK subscription. There is no additional fee. After you receive your NAVPAK version 21.0 or later, send an email to Support@navpak.com with the user name, company name and whether they will have user status or administrator status. An administrator can modify or delete the performance files of company aircraft.

NAVPAK Squirt MOBILE

1) Select Month:

2) Select Aircraft:

Admin:

3) Enter Route:

4)

Results	
SFO to PHX: \$4200.00 564nm, 649sm, 1.4hrs	
PHX to DAL: \$5100.00 762nm, 877sm, 1.7hrs	
DAL to MSP: \$6300.00 742nm, 854sm, 2.1hrs	
<u>Totals</u>	<u>Assumptions</u>
2068 nm	LEAR 35
2380 sm	January winds
5.2 hrs	\$3000.00/hr
\$15600.00	Adj = 0.1 hrs
Email To:	crc@navpak.com
Subject:	<input type="text"/>
<input type="button" value="Send Email"/>	

To operate the NAVPAK Squirt Mobile application you must instruct your smart phone to go to the NAVPAK web address. Then you must enter the Username and Password supplied to you by NAVPAK Support. If an employee leaves the company, NAVPAK Support (when notified) can shut down a user's access. All user access is shut down, if a subscription is allowed to lapse or in the event of non-payment of the annual subscription fee.

WHAT'S NEW IN VERSION 21.0 OF THE NAVPAK DISPATCHER

QUICK EXIT FROM SUPER SEARCH MAP - An Exit Module button at the lower right of the Super Search map screen allows you to return to the calling module without delay. In previous versions of Super Search, you had to back out through two screens using unnecessary clicks. Another

load more quickly and are easier to turn on or remove.

MORE CANADIAN AIRPORTS Access to new information from the Canadian government has led to the addition of 44 new Canadian Airports, which are now available for inclusion in itineraries. The AC-U-KWIK database includes all hard-surfaced airports with 3000 or more feet of runway. NAVPAK supplements that substantial database with a secondary database of shorter runways and landing strips that are too far into snow country to be paved. This secondary database is especially useful to charter operations and medical rescue.



Super Search module - Version 21.0 (1st half of 2010)

AIRPORTS RELATIVE TO TARGETED CITY: NOVATO, CALIFORNIA 123 Hits

Hide Airport Hit List		Narrow Airport Display		Preview & Print List		
0nm	0°	ID	Airport City	Runway	Fuel avail.	Approaches
2nm	359°	DVD	NOVATO, CA	3300 ft.	Jet-A + Avgas	VFR
9nm	333°	069	PETALUMA, CA	3600 ft.	Jet-A + Avgas	VOR/DME
15nm	50°	APC	NAPA, CA	5931 ft.	Jet-A + Avgas	LOC
25nm	89°	CCR	CONCORD, CA	5001 ft.	Jet-A + Avgas	LDA

convenience is the sorted listing of nearby airports. When a cell of interest is clicked the whole row is highlighted and the full details about the airport are immediately brought to the foreground. Once click does the whole process of drilling down for airport and FBO details.

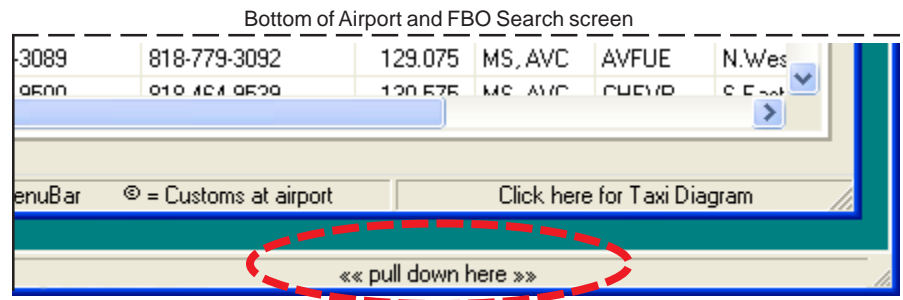
SUPER SEARCH HAS NEW UNITED STATES LOCATIONS - Access to new sources of information has led to the addition of over 200 new place listings in the United States and the Caribbean Islands. There are now almost 100,000 places contained in the United States database. From time to time someone finds a beach community or a suburb that we have missed, there is very little these days that is not found in a Super Search.

NEW EUROPEAN PLACES IN SUPER SEARCH - Access to new sources of information has led to the addition of over 1600 new place listings in the Europe Union and outlying islands in the Atlantic. The majority of new listings are in countries that were formally satellites of the former Soviet Union. In Europe they say that there is a person behind every tree. It could also be said that there is a small town around every bend in the road. That is why we were surprised to find an additional 1600 during the last six months.

THERE ARE MORE, EASIER TO USE NAVPAK HELP-SCREENS NAVPAK's NavHelp module now has more topics and more screen images to aid in learning and using NAVPAK's features. In addition, the help screens

THE CLIENT NAMES NOW AVAILABLE WHEN IN SCHEDULER - The Scheduler module now includes the option add or review Client Names. This adds another opportunity to review and modify the Client database while preparing a trip sheet. For anyone who wishes to export the Client database to a mail list or marketing program. For operator convenience, the client file is maintained in fixed fields and in plain English.

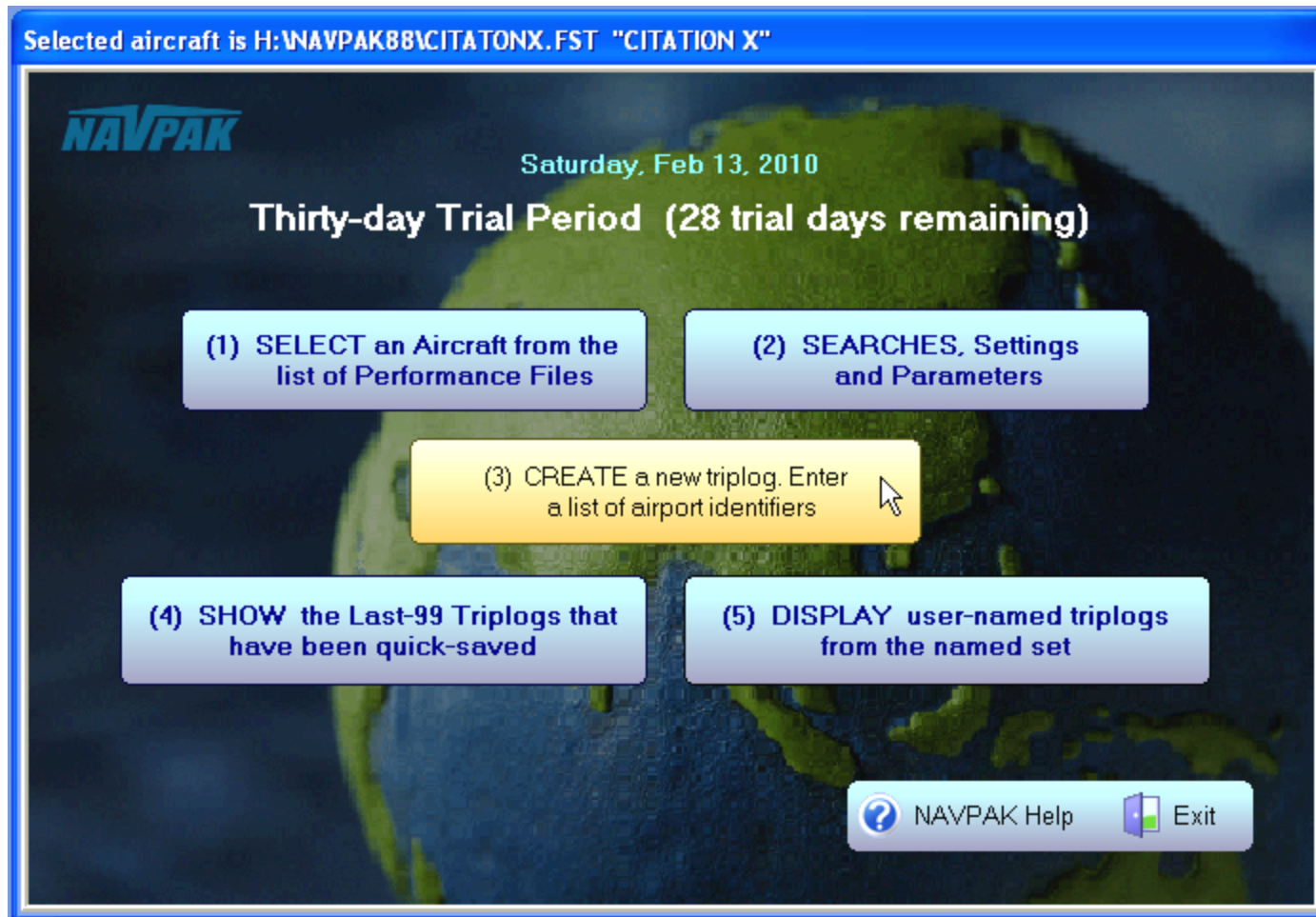
THE AIRPORT SEARCH SCREEN MEMORIZES SIZE SETTINGS - If you resize the Airport Search screen to make it fit your monitor, that resizing will remain in effect until you decide to change it again. Also the Airport Search screen can be resized more easily than in earlier versions. When you pull the outer window downward, the inner screen follows automatically. Expanding the airport search screen to full monitor size makes it easier to find FBOs, limosines, and airport services without scrolling.



WHAT'S NEW IN VERSION 21.0 OF THE NAVPAK DISPATCHER

NOW THERE ARE TWO SCHEDULER-BIDDER MODULES - The last ten months has been a period of intense development for the NAVPAK team. It began with the completion of a new version of the "Airport and FBO search" module in the Spring and was followed by a new version of the "Pilot

Perhaps we should clarify who needs the new Scheduler-Bidder module and who does not need it. That answer is simple. In the future virtually all new computers and laptops will have a 64-bit operating system and run Windows-7 or a later variation. This will happen slowly since many companies are still happy with their XPs.



If your computer has a 64-bit operating system you will need the new Scheduler & Bidder, because the new module is compatible with a 64-bit operating system. That system can take advantage of more RAM memory and in some cases run a bit faster.

If you are currently running Windows XP it is likely that you will get the best results with the current Scheduler & Bidder. It is optimized for the XP platform. If you are running Vista (32-bit) and have at least two gig of RAM you can run either version of the with the Scheduler-Bidder.

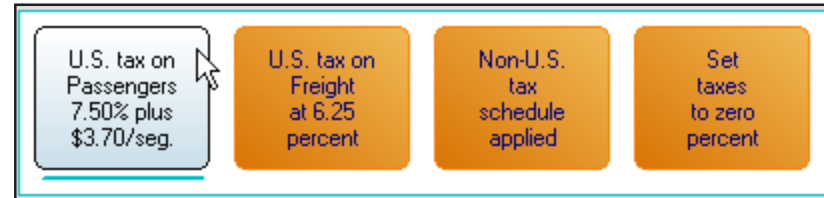
To sum up, if you have a new computer, a 64-bit computer or plenty of RAM, the new Scheduler & Bidder module is a good choice. The installer puts a pair of shortcuts on the desktop for the two different modules. The subtitles explain which one is for a 64-bit or Windows 7 system.

Timekeeper" module. Then we immediately began to re-write the "Scheduler-Bidder". The "Scheduler-Bidder" module has enormous scope and is clearly the largest of the various NAVPAK modules. Without this module Trip Sheets and Cost Estimates would be impossible to create.

THE SEVEN BUTTONS ON THE SCHEDULER-BIDDER ARE INTERACTIVE - The new Scheduler-Bidder module uses many buttons which change color when the user is in the "target zone". These buttons also produce a mechanical sound that permits the user click with with certainty that the button will react.

WHAT'S NEW IN VERSION 21.0 OF THE NAVPAK DISPATCHER

THE ACTION BUTTONS ON THE SCHEDULER SCREEN ARE BIGGER QUICKER AND MORE READABLE - The Scheduler screen is essential to assembling a complete and accurate trip sheet. For version 21.0, the buttons have been enlarged and identified with clear illustrations. The whole button is "hot". There are no dead spots. Wherever the button is clicked, the same action will be initiated. This practice also applies to the Bidder functions.



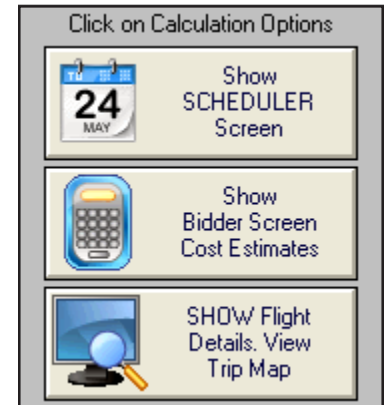
New interactive buttons on the Set Tax screen

NAVPAK SCHEDULER Time and Date Entry CITATION X

Preview & Print Client/Crew Pilot note Manifest Pax note Times-Dates Calendar Other options

Departure city --> Arrival city	Flight #	Flight Time	Taxi In+Out	Block to Block	Departure (24 hour clock)	Arrival (24 hour clock)	Departure (dd mm yy)	Arrival (dd mm yy)
PVD-->PIT	1	01:00	00:06	01:06	09:35 East. std.	10:41 East. std.	13 FEB 10	13 FEB 10
PIT-->LUK	2	00:36	00:06	00:42	16:30 East. std.	17:12 East. std.	13 FEB 10	13 FEB 10
LUK-->AGC	3	00:30	00:06	00:36	18:45 East. std.	19:21 East. std.	13 FEB 10	13 FEB 10

Column totals: 835 nm 2.1 hrs flight .3 hrs taxi 2.4 hrs block



New launch button on the Waypoint Entry screen. By the time version 21.5 is released, Part 91 users will be able to hid the Bidder button. Part 135 users can optionally hide the Scheduler button

THE MENU BAR BUTTONS ARE CENTERED FOR EASIER ACCESS
Replacement monitors have become larger and flatter. Today it is common to purchase a new computer with a 17" or 19" monitor. Generally, this is a welcome trend, but it often causes the active window to be farther away from the program's menu bar. The new Scheduler-Bidder centers the set of buttons on the Menu Bar so that they are easier to see and to reach with a mouse or track ball. It is surprising how many callers to the Help line are unaware of the buttons on the Menu Bar of each screen. By putting the buttons directly above the screens, NAVPAK users will discover many more options and alternatives.



New color-coded launch buttons in the Bid Preview-Print setup screen (right)



FUTURE DEVELOPMENTS IN THE 1ST HALF OF 2010 - There are additional modifications planned for the 64-bit-compatible Scheduler & Bidder module. It currently requires a lot of RAM. We are planning to reduce the size of this module and its demanding memory requirements. This work is already underway. Also the Monthly Planner module is being re-written to operate with 64-bit systems. These two projects will be completed before the mid-year release of NAVPAK version 21.5.